



Actual CLAT Paper 2017 (Answer Keys)

Directions of Test

Test Name	Actual CLAT Paper 2017	Total Questions	200	Total Time	120 Mins
------------------	------------------------	------------------------	-----	-------------------	----------

Section Name	No. of Questions	Marks per Question	Negative Marking
Verbal Ability	40	1	1/4
GK	50	1	1/4
Quantitative Ability	20	1	1/4
Reasoning	40	1	1/4
Legal Aptitude	50	1	1/4

Section : Verbal Ability

QNo:- 1 ,Correct Answer:- D

Explanation:- 'But' here is used to indicate that no one apart from the mother of the child would risk her life to save the baby

QNo:- 2 ,Correct Answer:- D

Explanation:- 'Going through' is the correct phrase. Here, it means undertaking the tests.

QNo:- 3 ,Correct Answer:- A

Explanation:- 'Setting aside' means keeping some time separately for a particular activity.



Actual CLAT Paper 2017 (Answer Keys)

QNo:- 4 ,Correct Answer:- C

Explanation:- The word **until** is used in the context of time whereas The word **unless** is used in the context of a precondition. The other two options do not state the precondition logically.

QNo:- 5 ,Correct Answer:- A

Explanation:- The standard structure of the sentence is 'will have' in the second part of the sentence when there is a condition with 'if'.

QNo:- 6 ,Correct Answer:- C

Explanation:- 'about' is the correct preposition in the context.

QNo:- 7 ,Correct Answer:- A

Explanation:- 'Fly over' is the correct phrase in the context as the helicopter was above the flooded area.

QNo:- 8 ,Correct Answer:- C

Explanation:- 'Stand before' means to stand in front of someone

QNo:- 9 ,Correct Answer:- C

Explanation:- 'Endow with' is the correct phrase meaning to have a particular quality or characteristic

QNo:- 10 ,Correct Answer:- A

Explanation:- The context is of 'landing in trouble' if the person did not help.



Actual CLAT Paper 2017 (Answer Keys)

QNo:- 11 ,Correct Answer:- D

Explanation:- Refer the lines, 'This reasoning – replicated in many countries – was contained in U. S. Ambassador Kantor's defence of the WTO, and it announced to a recognition that international trade and its benefits cannot be enjoyed unless trading nations accept the discipline of a negotiated rule-based environment.' A careful reading of the first paragraph helps us mark the answer with more confidence.

QNo:- 12 ,Correct Answer:- A

Explanation:- The WTO was not formed in the 1970s because the major countries did not think it would be beneficial to them

QNo:- 13 ,Correct Answer:- B

Explanation:- Refer the lines, 'Legal development can be defined as promotion of the technical legal values of consistency, clarity (or certainty) and effectiveness; these are values that those responsible for administering any legal system will seek to maximize. As it played out in the WTO, consistency meant integrating under one roof the whole lot of separate agreements signed under GATT auspices.'

QNo:- 14 ,Correct Answer:- A

Explanation:- Refer the second last para of the passage

QNo:- 15 ,Correct Answer:- A

Explanation:- The benefits refer to the gains from exports and how the countries will have to follow certain rules in order to enjoy these benefits.

QNo:- 16 ,Correct Answer:- C

Explanation:- Option 1 is incorrect as it uses the wrong preposition 'on' after laws. The correct preposition is 'to'. Option 2 is incorrect as it uses the word 'voter' in place of 'voters' used in the original sentence. In Option 4, the phrase 'to propose to pass' changes the context of the sentence. Only option 3 conveys the idea appropriately.



Actual CLAT Paper 2017 (Answer Keys)

QNo:- 17 ,Correct Answer:- B

Explanation:-

Option 2 is correct. The other options are unnecessarily wordy. In **A** and **B**, "it illogically" refers to "weakness" instead of "hypothesis".

In **C**, "plausible" refers "weakness".

In **E**, a coma is required after "hypothesis" since "which" is being used.

QNo:- 18 ,Correct Answer:- A

Explanation:- 'for' here is being used in place of because so the use of ',' after the phrase is incorrect. Also if the lady is clarifying then people must not know about the subject. therefore option 1 is correct where it says that people did not know.

QNo:- 19 ,Correct Answer:- B

Explanation:- D: "chiseled from solid rock" in correctly modifies "the mountainous region" instead of "monasteries".

A: "are dotting" suggests the process of "dotting" is continuing and more and more monasteries are adding to the existing number.

C: "are chiseled from ...centuries ago" is incorrect. "were chiseled" must be used instead of "are chiseled" for past tense.

B: Best choice. "many of them chiseled..." correctly modifies "monasteries".

QNo:- 20 ,Correct Answer:- A

Explanation:- we need to remove 'one' after other

QNo:- 21 ,Correct Answer:- A

Explanation:- Accommodation is the correct spelling

QNo:- 22 ,Correct Answer:- A

Explanation:- Gallows is the correct spelling meaning a frame, typically wooden, used for execution by hanging



Actual CLAT Paper 2017 (Answer Keys)

QNo:- 23 ,Correct Answer:- C

Explanation:- *Blasphemy is the correct spelling meaning the action or offence of speaking sacrilegiously about God or sacred things*

QNo:- 24 ,Correct Answer:- A

Explanation:- *Remuneration is the correct spelling*

QNo:- 25 ,Correct Answer:- D

Explanation:- *Annulment is the correct spelling*

QNo:- 26 ,Correct Answer:- C

Explanation:- *Interrogation is the correct spelling*

QNo:- 27 ,Correct Answer:- A

Explanation:- *Gratuitous is the correct spelling meaning done without good reason*

QNo:- 28 ,Correct Answer:- C

Explanation:-

Hypothecation is the correct spelling; It is legal term that refers to the granting of a hypothec to a lender by a borrower

QNo:- 29 ,Correct Answer:- A

Explanation:- *Moratorium is the correct spelling meaning a temporary prohibition of an activity*



Actual CLAT Paper 2017 (Answer Keys)

QNo:- 30 ,Correct Answer:- A

Explanation:- *Abeyance is the correct spelling meaning a state of temporary disuse or suspension*

QNo:- 31 ,Correct Answer:- B

Explanation:- *Replace 'are' by 'is' as the subject is singular*

QNo:- 32 ,Correct Answer:- C

Explanation:- *Remove 'may' and replace it with 'might'.*

QNo:- 33 ,Correct Answer:- A

Explanation:- *It should be 'with the hope'*

QNo:- 34 ,Correct Answer:- D

Explanation:- *You get 'red' on blushing.*

QNo:- 35 ,Correct Answer:- A

Explanation:- *Replace 'being finished' by 'finishing'*

QNo:- 36 ,Correct Answer:- C

Explanation:- *This is an error of parallelism. It should be 'bend and then lift'*

QNo:- 37 ,Correct Answer:- C

Explanation:- *The report 'should be submitted'*



Actual CLAT Paper 2017 (Answer Keys)

QNo:- 38 ,Correct Answer:- D

Explanation:- The correct phrase is 'work in hand'

QNo:- 39 ,Correct Answer:- B

Explanation:- 'The most' is redundant with unique so remove 'the most'

QNo:- 40 ,Correct Answer:- D

Explanation:- The correct phrase is 'start from scratch'

Section : GK

QNo:- 41 ,Correct Answer:- B

Explanation:-

QNo:- 42 ,Correct Answer:- D

Explanation:-

QNo:- 43 ,Correct Answer:- C

Explanation:-

QNo:- 44 ,Correct Answer:- D

Explanation:-

QNo:- 45 ,Correct Answer:- C

Explanation:-



Actual CLAT Paper 2017 (Answer Keys)

QNo:- 46 ,Correct Answer:- D

Explanation:-

QNo:- 47 ,Correct Answer:- D

Explanation:-

QNo:- 48 ,Correct Answer:- C

Explanation:-

QNo:- 49 ,Correct Answer:- C

Explanation:-

QNo:- 50 ,Correct Answer:- A

Explanation:-

QNo:- 51 ,Correct Answer:- B

Explanation:-

QNo:- 52 ,Correct Answer:- A

Explanation:-

QNo:- 53 ,Correct Answer:- D

Explanation:-



Actual CLAT Paper 2017 (Answer Keys)

QNo:- 54 ,Correct Answer:- B

Explanation:-

QNo:- 55 ,Correct Answer:- B

Explanation:-

QNo:- 56 ,Correct Answer:- D

Explanation:-

QNo:- 57 ,Correct Answer:- B

Explanation:-

QNo:- 58 ,Correct Answer:- B

Explanation:-

QNo:- 59 ,Correct Answer:- A

Explanation:-

QNo:- 60 ,Correct Answer:- D

Explanation:-

QNo:- 61 ,Correct Answer:- D

Explanation:-



Actual CLAT Paper 2017 (Answer Keys)

QNo:- 62 ,Correct Answer:- B

Explanation:-

QNo:- 63 ,Correct Answer:- A

Explanation:-

QNo:- 64 ,Correct Answer:- B

Explanation:-

QNo:- 65 ,Correct Answer:- A

Explanation:-

QNo:- 66 ,Correct Answer:- A

Explanation:-

QNo:- 67 ,Correct Answer:- D

Explanation:-

QNo:- 68 ,Correct Answer:- B

Explanation:-

QNo:- 69 ,Correct Answer:- D

Explanation:-



Actual CLAT Paper 2017 (Answer Keys)

QNo:- 70 ,Correct Answer:- C

Explanation:-

QNo:- 71 ,Correct Answer:- A

Explanation:-

QNo:- 72 ,Correct Answer:- B

Explanation:-

QNo:- 73 ,Correct Answer:- D

Explanation:-

QNo:- 74 ,Correct Answer:- D

Explanation:-

QNo:- 75 ,Correct Answer:- A

Explanation:-

QNo:- 76 ,Correct Answer:- B

Explanation:-

QNo:- 77 ,Correct Answer:- D

Explanation:-



Actual CLAT Paper 2017 (Answer Keys)

QNo:- 78 ,Correct Answer:- D

Explanation:-

QNo:- 79 ,Correct Answer:- D

Explanation:-

QNo:- 80 ,Correct Answer:- C

Explanation:-

QNo:- 81 ,Correct Answer:- A

Explanation:-

QNo:- 82 ,Correct Answer:- D

Explanation:-

QNo:- 83 ,Correct Answer:- C

Explanation:-

QNo:- 84 ,Correct Answer:- A

Explanation:-

QNo:- 85 ,Correct Answer:- A

Explanation:-



Actual CLAT Paper 2017 (Answer Keys)

QNo:- 86 ,Correct Answer:- D

Explanation:-

QNo:- 87 ,Correct Answer:- C

Explanation:-

QNo:- 88 ,Correct Answer:- C

Explanation:-

QNo:- 89 ,Correct Answer:- C

Explanation:-

QNo:- 90 ,Correct Answer:- A

Explanation:-

Section : Quantitative Ability

QNo:- 91 ,Correct Answer:- A

Explanation:- Banker's discount (BD) for 1.5 years = Rs. 600

\therefore B.D for 3 years = Rs. 1200

True discount (T. D) for 3 years = Rs. 750

$$\begin{aligned} \text{Sum} &= \frac{\text{BD} \times \text{TD}}{\text{BD} - \text{TD}} = \frac{1200 \times 750}{1200 - 750} \\ &= \frac{1200 \times 750}{450} = \text{Rs. } 2000 \end{aligned}$$

\therefore Rs. 1200 is the SI on Rs. 2000 for 3 years

or, Rs. 400 is the SI on Rs. 2000 for 1 year

$$\text{i.e. Rate} = \left(\frac{400}{2000} \right) \times 100 = 20\%$$

Hence option 1



Actual CLAT Paper 2017 (Answer Keys)

QNo:- 92 ,Correct Answer:- D

Explanation:- Final fraction of milk = (initial fraction of milk) \times (1- fraction of mixture taken out)ⁿ

Where n is the no. of times process is done.

Thus, $1/2 = 5/8 \times (1 - f)$

i.e. $1 - f = 4/5$

i.e. $f = 1/5$

Hence option 4

QNo:- 93 ,Correct Answer:- B

Explanation:- Let the number of notes of Rs. 2, Rs. 5 and Rs. 10 be 3x, 5x and 8x respectively.

$\Rightarrow 3x \times 2 + 5x \times 5 + 8x \times 10 = 4662$

i.e. $111x = 4662$

$\Rightarrow x = 42$

Then number of Rs. 5 Notes = $5 \times 42 = 210$

Hence option 2

QNo:- 94 ,Correct Answer:- A

Explanation:- Let total units to be filled = LCM (37.5, 45) = 900 units

\therefore A can fill = $\frac{900}{37.5} = 24$ units in a minute

B can fill = $\frac{900}{45} = 20$ units in a minute.

A fills for entire 30 units, it must have filled = $24 \times 30 = 720$ units

\Rightarrow B fills $900 - 720 = 180$ units

To fill 180 units, B will take $180/20 = 9$ minutes.

i.e. after 9 min. B should be turned off.

Hence option 1.



Actual CLAT Paper 2017 (Answer Keys)

QNo:- 95 ,Correct Answer:- C

Explanation:- Let distance = D {downstream speed = $8 + 4 = 12$ km, upstream speed = $8 - 4 = 4$ km}

$$\text{ATQ. } \frac{D}{4} + \frac{D}{12} = 5$$

$$D = 15 \text{ km}$$

Hence option 3.

QNo:- 96 ,Correct Answer:- A

$$\begin{aligned} \text{Required prob.} &= \frac{2}{6} \times \frac{3}{12} + \frac{4}{6} \times \frac{9}{12} \\ &= \frac{42}{72} = \frac{7}{12} \end{aligned}$$

Explanation:-

Hence option 1

QNo:- 97 ,Correct Answer:- B

Explanation:- Use the backward approach. Total money will be = $[(20 + 5) \times 2] \times 2 = 100$

(Alternatively, use options rather than equations)

Hence option 2

QNo:- 98 ,Correct Answer:- C

Explanation:- Let CP of 1gm = Rs. 1

1 kg cost = Rs. 1000

But as he sells only 900 gm

$$\therefore \text{CP} = \text{Rs. } 900$$

Further, he sells at markup of 20%,

$$\therefore \text{SP} = \text{Rs. } 1200$$

$$\text{So, profit \%} = \frac{300}{900} \times 100 = 33.3\%$$

Hence option 3



Actual CLAT Paper 2017 (Answer Keys)

QNo:- 99 ,Correct Answer:- D

Explanation:- The difference between C.I & S.I for 2 years is given by the formula:

$$CI - SI = P \left(\frac{R}{100} \right)^2$$

$$\Rightarrow 98 = 5000 \left(\frac{R}{100} \right)^2$$

On solving $\Rightarrow R = 14\%$

\therefore Hence option 4

QNo:- 100 ,Correct Answer:- D

Explanation:- Let 10 years ago, age of son = x years

Age of father = $3x$ years

So present age of son = $x + 10$ years & present age of father = $3x + 10$ years

10 years later, age of father = $3x + 10$ years

10 years later, age of father = $3x + 20$ years

10 years later, age of son = $x + 20$ years

ATQ. $3x + 20 = 2(x + 20)$

$$\Rightarrow x = 20$$

\therefore present age of father = $3 \times 20 + 10 = 70$ years

Present age of son = $20 + 10 = 30$ years

\therefore Ratio = $70/30 = 7:3$

Hence option 4

QNo:- 101 ,Correct Answer:- C

Explanation:- Since average weight of x, y and $z = 75$ kg

\therefore Total weight of $X + Y + Z = 75 \times 3 = 225$ kg

Also the total weight of $X + Y + Z + A = 80 \times 4 = 320$ kg

\therefore weight of $A = 320 - 225 = 95$ kg

Now, weight of $B = 95 + 5 = 100$ kg

Total weight of $Y + Z + A + B = 85 \times 4 = 340$ kg

Thus, total weight of $Y + Z + A = 340 - 100 = 240$ kg

Weight of $X = 320 - 240 = 80$ kg

Hence option 3



Actual CLAT Paper 2017 (Answer Keys)

QNo:- 102 ,Correct Answer:- B

Explanation:- Since the clock loses 10 min/h

The time shown by it after an hour after 12 O'clock will be 12:50

Now, angle made at 12:50

$$\begin{aligned} &= \left| \frac{11m}{2} - 30h \right| \\ &= \left| \frac{11 \times 50}{2} - 30 \times 12 \right| \\ &= |275 - 360| \\ &= 85^\circ \end{aligned}$$

Hence option 2

QNo:- 103 ,Correct Answer:- C

Explanation:- Let speed of boat in still water = x km/h

Speed of stream = y km/h

Downstream speed = $(x + y)$ km/h

Upstream speed = $(x - y)$ km/h

$$\text{Given } \frac{5}{x+y} = \frac{3}{x-y}$$

$$\Rightarrow 5x - 5y = 3x + 3y$$

$$\Rightarrow 2x = 8y$$

$$\Rightarrow x = 4y \dots\dots\dots (i)$$

$$\text{Also } \frac{45}{x+y} + \frac{45}{x-y} = 12$$

$$(i) \Rightarrow \frac{45}{4y+y} + \frac{45}{4y-y} = 12$$

$$\Rightarrow \frac{45}{5y} + \frac{45}{3y} = 12$$

$$\Rightarrow y = 2 \text{ km/h}$$

Hence option 3



Actual CLAT Paper 2017 (Answer Keys)

QNo:- 104 ,Correct Answer:- C

Explanation:- Let 'C' can do the same work in x days.

When A, B & C work together, then their one day work

$$\Rightarrow \frac{1}{8} + \frac{1}{10} + \frac{1}{x} = \frac{1}{4}$$

$$\Rightarrow \frac{5x + 4x + 40}{40x} = \frac{1}{4}$$

$$\Rightarrow 9x + 40 = 10x$$

$$\Rightarrow x = 40$$

\therefore 'C' alone can complete the same work in 40 days.

$$\text{The one day ratio of A, B \& C} = \frac{1}{4} : \frac{1}{5} : \frac{1}{20}$$

$$= 5 : 4 : 1$$

Since total wages = Rs. 720

$$\text{C's share} = \frac{1}{10} \times 720 = \text{Rs. 72}$$

Hence option 3

QNo:- 105 ,Correct Answer:- A

Explanation:- Let total workers = 900

$$\text{No. of males} = \frac{1}{3} \times 900 = 300$$

$$\text{Married men} = \frac{1}{2} \times 300 = 150$$

$$\text{Married men with children} = \frac{1}{3} \times 150 = 50$$

$$\text{Now, No. of females} = 900 - 300 = 600$$

$$\text{No. of married women} = \frac{3}{4} \times 600 = 450$$

$$\text{No. of married women with children} = \frac{2}{3} \times \frac{2}{3} \times 450 = 200$$

$$\text{Total married workers with children} = 50 + 200 = 250$$

$$\text{No. of workers without children} = 900 - 250 = 650$$

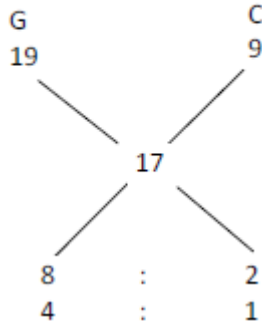
$$\therefore \text{fraction of workers without children} = \frac{650}{900} = \frac{13}{18}$$



Actual CLAT Paper 2017 (Answer Keys)

QNo:- 106 ,Correct Answer:- B

Use alligation Rule



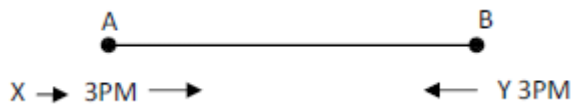
Explanation:-

Hence option 2

QNo:- 107 ,Correct Answer:- A

Explanation:- Train X takes = 1.5h to go from A to B

Train Y takes = 1h to go from B to A



Their time ratio = 3: 2

∴ Speed Ratio = 2 : 3

Suppose speed of x = 2 km/h and y = 3 km/h

Distance between A & B = $2 \times \frac{3}{2} = 3\text{km}$

Now crossing time of A & B = $\frac{D}{\text{Relative Speed}}$

= $\frac{3}{5} \times 60$

= 36 min

i.e. 36 min after 3 pm

Hence option 1



Actual CLAT Paper 2017 (Answer Keys)

QNo:- 108 ,Correct Answer:- C

Explanation:- 2 Men + 7 boys → 14 days ⇒ 28 men + 98 boys → 1 day (i)

3 Men + 8 boys → 11 days ⇒ 33 men + 88 boys → 1 day (ii)

From (i) and (ii) we get 1 Man = 2 boys

Now 8 men + 6 boys = 22 boys

Also from (i) : 154 boys can do the work in 1 day. i.e. 1 boy can do the work in $154/22 = 7$ days.

Thus, 22 boys can do thrice the work in $7 \times 3 = 21$ days

Hence option 3.

QNo:- 109 ,Correct Answer:- D

Explanation:- Let total units of work = 48 units

Then, $A + B = 4$ units/day

$B + C = 6$ units/day ; $C + A = 3$ units/day.

Now $2(A + B + C) = 13$ units / day

Or. $A + B + C = 6.5$ units/day

This means $A + B + C$ will do 19.5 units in 3 days work left = $48 - 19.5 = 28.5$ units. Which has to be done by B & C.

Time taken by B & C to finish remaining work = $\frac{28.5}{6} = 4.75$ days

Hence option 4

QNo:- 110 ,Correct Answer:- D

Explanation:- Let cost be Rs. x /metre

Length of piece in first case = $\frac{75}{x}$

Also in 2nd case : Length of piece is $\left(\frac{75}{x} + 4\right)$ and cost/piece = $(x - 5)$

Since total cost is same.

$$\therefore \left[\frac{75}{x} + 4\right] \times (x - 5) = 75$$

On solving above eq. we get $x = 12.5$ & -7.5

(Rejecting the -ve value.)

$$\therefore \text{Length of piece} = \frac{75}{12.5} = 6\text{m}$$

Hence option 4



Actual CLAT Paper 2017 (Answer Keys)

Section : Reasoning

QNo:- 111 ,Correct Answer:- C

Explanation:- The arrangement is given in the following table

Name	A	B	C	D	E
Profession	Singer	Teacher	Dancer	Painter	Doctor
Preference	Rice	Chapatti	Rice	Chapatti	Rice

QNo:- 112 ,Correct Answer:- A

Explanation:- The arrangement is given in the following table

Name	A	B	C	D	E
Profession	Singer	Teacher	Dancer	Painter	Doctor
Preference	Rice	Chapatti	Rice	Chapatti	Rice

QNo:- 113 ,Correct Answer:- A

Explanation:- The arrangement is given in the following table

Name	A	B	C	D	E
Profession	Singer	Teacher	Dancer	Painter	Doctor
Preference	Rice	Chapatti	Rice	Chapatti	Rice

QNo:- 114 ,Correct Answer:- A

Explanation:- The final arrangement looks like:

South Face	U	R	P
North Face	Q	T	S
OR			
South Face	P	R	U
North Face	S	T	Q



Actual CLAT Paper 2017 (Answer Keys)

QNo:- 115 ,Correct Answer:- C

Explanation:- The final arrangement looks like:

South Face	U	R	P
North Face	Q	T	S
		OR	
South Face	P	R	U
North Face	S	T	Q

QNo:- 116 ,Correct Answer:- A

Explanation:- The final arrangement looks like:

South Face	U	R	P
North Face	Q	T	S
		OR	
South Face	P	R	U
North Face	S	T	Q

QNo:- 117 ,Correct Answer:- A

Explanation:- Option 1 is appropriate.

QNo:- 118 ,Correct Answer:- C

Explanation:- Option c is appropriate.

QNo:- 119 ,Correct Answer:- D

Explanation:- Clearly visible is odd one out from the given options. Hence option 4



Actual CLAT Paper 2017 (Answer Keys)

QNo:- 120 ,Correct Answer:- A

Explanation:- Cruise is different from others. Cruise is a journey basically for leisure. Expedition is a journey undertaken by a group of people with a particular purpose. Crusade & Campaign mean the same.

QNo:- 121 ,Correct Answer:- B

Explanation:- Total chocolates before distribution to children = $12 \times 12 = 144$
10 chocolates were given to children, the number of chocolates left = $144 - 10 = 134$
Since two more dozens of chocolates were added, then total chocolates = $134 + 24 = 158$
No. of chocolates per packet = $158/2 = 79$
Hence option 2

QNo:- 122 ,Correct Answer:- D

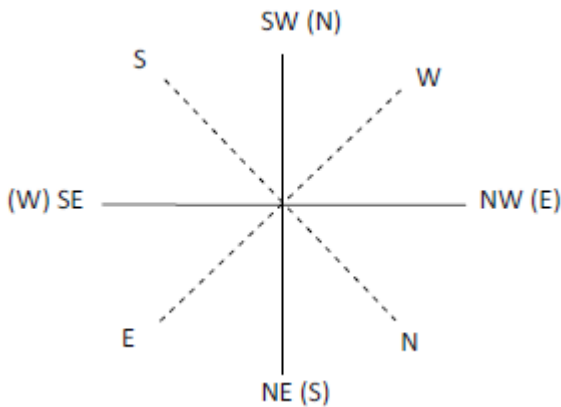
Explanation:- Ms. X birthday = 4th October
Ms. Y birthday = 28th September
Now calculating odd days:
Aug. (16 days left) = 2 odd days
Sep. (till 28th) = 0 odd days
i.e. total odd days = 2
i.e. Ms Y was born 2 days after Sunday = Tuesday.
Hence option 4



Actual CLAT Paper 2017 (Answer Keys)

QNo:- 123 ,Correct Answer:- D

Explanation:- South - East becomes north, North - East becomes west, West will become South - East.



Hence option 4

QNo:- 124 ,Correct Answer:- C

Explanation:- Grandfather's only son = Father (Assuming grandfather as paternal)
So, Prakash's grandfather's only son's daughter will be Prakash's sister. This means Prakash (considering him to be a male) will be brother of the girl.
Hence option 3

QNo:- 125 ,Correct Answer:- D

Explanation:-

Almost one third of the human body is made up of water is true

QNo:- 126 ,Correct Answer:- A

Explanation:- Ravi's younger brother's grandmother = Ravi's grandmother
Ravi's grandmother's only son = Ravi's Father.
Ravi's grandmother's only son's wife = Ravi's mother.
The boy in the photograph is the son of Ravi's mother i.e. Ravi and the boy in the photograph are siblings i.e. brothers .
Hence option 1



Actual CLAT Paper 2017 (Answer Keys)

QNo:- 127 ,Correct Answer:- D

Explanation:- Misologist. Hence option 4

QNo:- 128 ,Correct Answer:- C

Explanation:- Wave : Crest as Mountain : Peak
Hence option 3

QNo:- 129 ,Correct Answer:- A

Explanation:- Splinter : Wood
Hence option 1

QNo:- 130 ,Correct Answer:- D

Explanation:- Apostate Hence option 4

QNo:- 131 ,Correct Answer:- D

Explanation:- Hence option 4

QNo:- 132 ,Correct Answer:- C

Explanation:- Some of the valuable books are seldom read, means some of the valuable books are not read. Hence option 3

QNo:- 133 ,Correct Answer:- A

Explanation:- Since, 60% workers are males, then 40% workers are females.

Now 40% of total = 800

\therefore 60% of total = $800/40 \times 60 = 1200$

Hence option 1



Actual CLAT Paper 2017 (Answer Keys)

QNo:- 134 ,Correct Answer:- B

Explanation:- Every hour the hands of a clock are at right angles twice i.e. in 6h (4 to 10) they would be right angles to each other 12 times. 3 o'clock is the common time in the range 2 to 3 and 3 to 4. So, we subtract this once due to repetition in counting. Therefore from 4 pm to 10 pm the two hands of a clock will be perpendicular to each other 11 times. Hence option 2

QNo:- 135 ,Correct Answer:- D

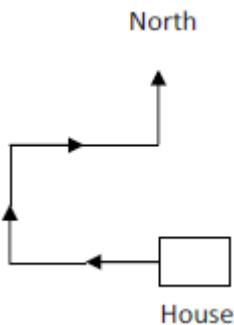
Explanation:- The answer is history. Just check options. Economics is preferred over Maths. Math is preferred over history and also social is preferred over Maths. Hence option 4

QNo:- 136 ,Correct Answer:- B

Explanation:- One man is facing south, thus one lady will be facing North (as persons opposite to each other are of opposite sex). Further, as no lady is facing east, another lady will face west and another man will face east. Thus the ladies are facing north and west. Hence option. 2

QNo:- 137 ,Correct Answer:- B

Explanation:- From school if we go back to home. we first turn the bus South. Now, turn right i.e. west then turn left i.e. South and again turn left i.e. east. This means, initially the bus must have been facing west (as it faces each when it enters his house)



Hence option 2.



Actual CLAT Paper 2017 (Answer Keys)

QNo:- 138 ,Correct Answer:- B

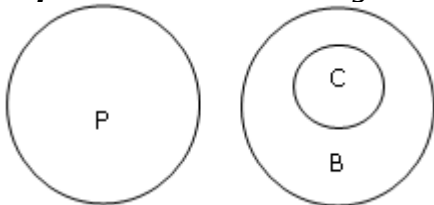
Explanation:- M I L I T A R Y
1 2 3 2 4 5 6 7

T A I L
4 5 2 3

Hence option 2

QNo:- 139 ,Correct Answer:- B

Explanation:- According to the statement diagram is



Most probable answer will be no crow is parrot
Hence option 2

QNo:- 140 ,Correct Answer:- D

Explanation:- In this question it was no where mentioned that house, theatre, hospital and university were all in different directions and also we are not sure John walks in which direction from his house. So correct answer should be cannot be determined

QNo:- 141 ,Correct Answer:- D

Explanation:- Ram's Mother's Father = Ram's maternal grandfather. Only son of Ram's maternal grandfather = Ram's maternal uncle.

Ram's maternal uncle is girls mother's brother i.e. Ram's maternal uncle is also the girl's maternal uncle.

This means Ram and girl could be siblings. thus, girl's mother could be related to Ram as his mother.

Hence option 4



Actual CLAT Paper 2017 (Answer Keys)

QNo:- 142 ,Correct Answer:- D

Explanation:-

QNo:- 143 ,Correct Answer:- A

Explanation:- A is coded as 'a', B is coded as 'r', N is coded as 'm' and so on. Thus 'bituo' will be the code for SOLID. Hence option 1

QNo:- 144 ,Correct Answer:- D

Explanation:- Ravi's daughter's father = Ravi himself (in case Ravi is a male).
Now Ramesh is the son of his daughter's father i.e. of Ravi. So Ramesh is Ravi's son.
If we consider Ravi to be a female, Ramesh is the Son of Ravi.

Note: In this question not clear that Ramesh is who's who. Also if we talk w.r.t. Ravi then Ramesh is Ravi's son, which is not available in options)
So answer must be can't be determined.

QNo:- 145 ,Correct Answer:- A

Explanation:- Mare : Horse as Sow : Boar
Hence option 1

QNo:- 146 ,Correct Answer:- B

Explanation:- 27th March 2011 was Sunday

Now finding odd days

March - 4 odd days (as 4 digit left)

April (full month) - 2 odd days

May (full month) - 3 odd days

June (till 27) - 6 odd days

Now total odd days = $4 + 2 + 3 + 6 = 15$. i.e. 1 odd day i.e. 27th June 2011 is 1 day after Sunday i.e. on Monday.

Hence option 2



Actual CLAT Paper 2017 (Answer Keys)

QNo:- 147 ,Correct Answer:- D

Explanation:- $9 : 9 \times 8 :: 8 : 8 \times 8 = 64$

Hence option 4

QNo:- 148 ,Correct Answer:- A

Explanation:- $A + 3 = D + 3 = G + 3 = J$

$X - 3 = U - 3 = R - 3 = O$

So missing term is J O

Hence option 1

QNo:- 149 ,Correct Answer:- A

Explanation:- Girl's uncle father = Girl's grandfather (paternal or maternal)

Girl's uncle's father's daughter = Girl's grandfather's daughter = Girl's aunt or girl's mother.

The bag is the son of the girl's aunt or girl's mother.

The boy and girls could be cousins or siblings,. Thus, the boy would be the brother.

Hence option 1

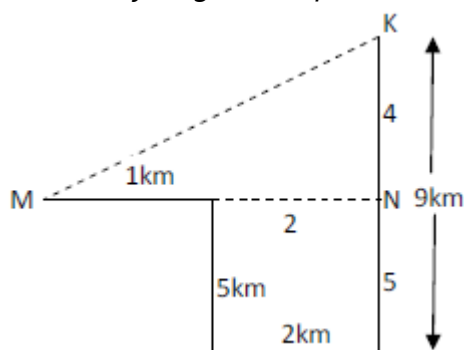
QNo:- 150 ,Correct Answer:- B

Explanation:- $MN = 3 \text{ km}$

$KN = 4 \text{ km}$

$\therefore MK = 5 \text{ km}$

(3, 4, 5, Pythagoras Triplet)



Hence option 2



Actual CLAT Paper 2017 (Answer Keys)

Section : Legal Aptitude

QNo:- 151 ,Correct Answer:- C

Explanation:- The correct option is self explanatory, since David affixed forged signatures of the artist in order to make the potential buyers believe, that the paintings were original. The principle makes it clear that when a person falsified something with the intent to deceive another person or entity; it is forgery-which includes changing or adding the signature on a document.

QNo:- 152 ,Correct Answer:- C

Explanation:- The principle clarifies that fundamental rights cannot be taken away by the State which is defined in Article 12 of the Indian Constitution. In case the fundamental rights are violated by the State, the aggrieved party may approach the court. In the given factual situation the restriction is imposed by AB Chemicals (Pvt.) Ltd. and hence Navin does not have any remedy.

QNo:- 153 ,Correct Answer:- C

Explanation:- As per the principle carnal intercourse is disallowed with a man and a woman. Such an intercourse is a punishable offence. However, the factual situation specifies a situation where a man is arrested for having carnal intercourse with an animal. Since animal isn't specified as a category, the man won't be punished as per the law elaborated in the principle.

QNo:- 154 ,Correct Answer:- A

Explanation:- B has not committed any offence since he killed A in order to save his life. The fact that A attacked B, under the influence of madness, doesn't absolve B's right to save his life.



Actual CLAT Paper 2017 (Answer Keys)

QNo:- 155 ,Correct Answer:- D

Explanation:- The question requires a careful reading and a careful application of the principle. The principle says that the dominating party has the prerogative to enforce the contract. The factual situation makes it clear that the doctor is in a dominating position and hence when the patient makes half of the payment, hence it is the doctor's exclusive choice to get the contract enforced.

QNo:- 156 ,Correct Answer:- A

Explanation:- The principle says that-Sale is complete when property gets transferred from the seller to the buyer on sale. A sold his car to B and A kept the car in his possession for a month on B's request. Hence the sale is complete.

QNo:- 157 ,Correct Answer:- B

Explanation:- One of the most cardinal rules of natural justice is "Hear both sides". Any decision that is delivered without hearing both the parties isn't a fair one. Both sides to an event must be considered before a decision is made.

QNo:- 158 ,Correct Answer:- B

Explanation:- The principle clarifies that even though a minor is not competent to contract, nothing in the Contract Act prevents him from making the other party bound to the minor. Hence when a promissory note is duly executed in favour of a minor, it is a benefit due to the minor and it won't be void.

QNo:- 159 ,Correct Answer:- B

Explanation:- Zameer actively conceals his serious ailment in order to conclude the contract of buying the life insurance policy. Such an active concealment amounts to fraud as per the given principle.



Actual CLAT Paper 2017 (Answer Keys)

QNo:- 160 ,Correct Answer:- D

Explanation:- In order to claim compensation successfully one should be able to prove that the accident/physical injury took place in the course of employment. S rushed back to the office after he received a message from his office and consequently met with an accident. Hence he is entitled to get compensation from his employer.

QNo:- 161 ,Correct Answer:- A

Explanation:- The principle specifies that as per Section 2 of the Industrial Disputes Act, 1947- any dispute or difference between employers and workmen would amount to an industrial dispute as long as it is in connected to terms of employment.

QNo:- 162 ,Correct Answer:- D

Explanation:- Rahul acted fraudulently when he pretended to be the door to door salesman with United Manufacturing Company despite his dismissal from the said post. The company should have taken sufficient steps to ensure that the customers were aware of such a dismissal.

QNo:- 163 ,Correct Answer:- A

Explanation:- When B uses A's ATM card without his knowledge-even though he merely checks the account balance-his conduct amounts to fraud.

QNo:- 164 ,Correct Answer:- C

Explanation:- The right of private defence can be exercised duly only in a situation where the danger to life or property is real and imminent. The factual situation lays down that the dog was only barking at X. Its essential to keep in mind that the dog was chained and hence there wasn't any real or unavoidable threat to Mr. X. Moreover, when Mr. X fired the shot the dog had stopped barking completely.



Actual CLAT Paper 2017 (Answer Keys)

QNo:- 165 ,Correct Answer:- B

Explanation:- This question required a careful reading of the legal principle since it's a complete deviation from the actual law on the offence of kidnapping. A straight application of the given legal principle makes it clear that A has committed no offence.

QNo:- 166 ,Correct Answer:- B

Explanation:- This question required a careful reading of the legal principle since it's a complete deviation from the actual law on the offence of assault. As per the principle Rustom hasn't committed an assault on Sheetal since he did not cause any bodily injury.

QNo:- 167 ,Correct Answer:- C

Explanation:- When the doctor leaves a small cotton swab inside the abdomen of the patient, it's a clear case of negligence. The doctor failed to take proper care while conducting the surgery.

QNo:- 168 ,Correct Answer:- A

Explanation:- Situation 1- P makes an offer and R makes a counter offer instead of accepting P's offer.

Situation 2- C merely discloses information and it can't be equated with an offer.

Situation 3- L tells K that he would be interested in selling the furniture. However there is no acceptance of the same.

Situation 4- R and S agree upon the same thing in the same manner. Hence the contract is complete as per the legal principle.

QNo:- 169 ,Correct Answer:- B

Explanation:- The principle clarifies that a contract that is entered into for an immoral or illegal purpose will be invalid. R had entered into a contract with P that she would allow him to keep smuggled goods and drugs in the house, transferred to her by him. Since the ultimate end or objective was unlawful or illegal, the contract becomes unenforceable.



Actual CLAT Paper 2017 (Answer Keys)

QNo:- 170 ,Correct Answer:- D

Explanation:- T has committed the tort of trespass since he was present on the property which is owned by P. Intention does not matter in the tort of trespass. Even though T just walked over the land of P to reach his house. He committed the tort of trespass.

QNo:- 171 ,Correct Answer:- B

Explanation:- Free consent is an essential ingredient for entering into a valid agreement as per the Indian Contract Act, 1872. Undue influence, coercion, fraud, misrepresentation and mistake tend to interfere with the free consent of a party to a contract. A executed the Gift deed in favour of P because he was forced to do so, hence A has the right to withdraw from the contract.

QNo:- 172 ,Correct Answer:- A

Explanation:- The principle clarifies that when a person falsifies something with the intent to deceive another person or entity, it's forgery. In the given context the publisher added a few details to give completeness to the sentences, so that the readers got a clear picture of the writer's intention. Hence the intention to falsify is missing, which is essential for completing the offence of forgery.

QNo:- 173 ,Correct Answer:- B

Explanation:- P can claim damages from S because he gave consent for the removal of appendicitis.

QNo:- 174 ,Correct Answer:- B

Explanation:- This is a case of *damnum sine injuria* and the facts are similar to the – GLOUCESTER GRAMMAR SCHOOL CASE- the determinant factor for the successful claim of compensation is the infringement of a legal right. In the given factual situation there has been no infringement of a legal right.



Actual CLAT Paper 2017 (Answer Keys)

QNo:- 175 ,Correct Answer:- B

Explanation:- The loan was taken by Soloman in his personal capacity in order to fund his daughter's education. Hence irrespective of his professional capacity he will be liable.

QNo:- 176 ,Correct Answer:- D

Explanation:- The principle is equating the finder of lost goods with a bailee. Section 148 of the Indian Contract Act 1872 elaborates on the contract of bailment. The bailor is under the duty to indemnify the bailee for any extra ordinary expenses.

QNo:- 177 ,Correct Answer:- C

Explanation:- Certainty of terms is paramount for the conclusion of a valid contract. Wherever the terms of a contract are uncertain or their meaning is ambiguous or incapable of being made certain, then such terms cannot be enforced by a court of law.

QNo:- 178 ,Correct Answer:- A

Explanation:- X is liable for misappropriation and embezzlement, as is clear from the straight application of the principle. X made an illegal use of the valuables that belonged to A. X misused his position of trust since it was his duty to keep the valuables in safe custody. X has committed embezzlement because he misappropriated the money that had been entrusted to him by A.

QNo:- 179 ,Correct Answer:- D

Explanation:- B cannot claim damages from A because A did not accept B's counter offer where he was willing to buy the motorcycle for Rs. 20,000/-

QNo:- 180 ,Correct Answer:- C

Explanation:-



Actual CLAT Paper 2017 (Answer Keys)

QNo:- 181 ,Correct Answer:- D

Explanation:- Sanju, Dilbag and Sushil had the common intention to commit burglary. So as far as the offence of burglary is concerned all three will be liable as if the offence was committed by them alone. However the three did not have the common intention to rape the female servant. Hence a lack of common intention will make Sanju liable for the offence alone.

QNo:- 182 ,Correct Answer:- D

Explanation:- A has not committed defamation since the publication of the defamatory statement is very essential. Publication means when the defamatory statement comes to the knowledge of a third person. In this case the defamatory statement does not come to the knowledge of a third party.

QNo:- 183 ,Correct Answer:- C

Explanation:- Y will not be entitled to receive compensation from X. X will only be responsible for defects, if any, in the engine. The bursting of the tyre is not connected to the job performed by X

QNo:- 184 ,Correct Answer:- C

Explanation:- This is a case of a general offer and anybody who fulfills the stipulated condition will be able to claim the benefits of the offer.

QNo:- 185 ,Correct Answer:- C

Explanation:- Arbitration is a form of an Alternative Dispute Resolution Mechanism. Arbitration and Conciliation Act was enacted in the year 1996.

QNo:- 186 ,Correct Answer:- B

Explanation:- Latin for "in equal fault (better is the condition of the possessor)", is a legal term used to indicate that two persons or entities are equally at fault, whether the malfeasance in question is a crime or tort.



Actual CLAT Paper 2017 (Answer Keys)

QNo:- 187 ,Correct Answer:- C

Explanation:- *The ius gentium or jus gentium (Latin, "law of nations") is a concept of international law within the ancient Roman legal system and Western law traditions based on or influenced by it. The ius gentium is not a body of statute law or a legal code, but rather customary law thought to be held in common by all gentes ("peoples" or "nations") in "reasoned compliance with standards of international conduct."*

QNo:- 188 ,Correct Answer:- D

Explanation:- *Pari-passu is a Latin phrase meaning "equal footing" that describes situations where two or more assets, securities, creditors or obligations are equally managed without any display of preference. An example of pari-passu occurs during bankruptcy proceedings when a verdict is reached: all creditors can be regarded equally and will be repaid at the same time and at the same fractional amount as all other creditors.*

QNo:- 189 ,Correct Answer:- B

Explanation:- *Pari-passu is a Latin phrase meaning "equal footing" that describes situations where two or more assets, securities, creditors or obligations are equally managed without any display of preference. An example of pari-passu occurs during bankruptcy proceedings when a verdict is reached: all creditors can be regarded equally and will be repaid at the same time and at the same fractional amount as all other creditors.*

QNo:- 190 ,Correct Answer:- B

Explanation:- *Adjournment sine die (from the Latin "without day") means "without assigning a day for a further meeting or hearing". To adjourn an assembly sine die is to adjourn it for an indefinite period. A legislative body adjourns sine die when it adjourns without appointing a day on which to appear or assemble again. It can be used in reference to United States legislatures whose terms or mandates are coming to an end, and it is anticipated that this particular body will not meet again in its present session, form, or membership. A legislative body adjourned in this way may be called back into special session, a reason why sine die adjournment rather than dissolution may be preferred in some cases.*



Actual CLAT Paper 2017 (Answer Keys)

QNo:- 191 ,Correct Answer:- D

Explanation:- An intention to possess (sometimes called *animus possidendi*) is the other component of possession. All that is required is an intention to possess something for the time being. In common law countries, the intention to possess a thing is a fact.

QNo:- 192 ,Correct Answer:- A

Explanation:- The meaning of *lis pendens* is - 'a pending legal action', wherein *Lis* means the 'suit' and *Pendens* means 'continuing or pending'. The doctrine has been derived from a latin maxim "Ut pendent nihil innovetur" which means that during litigation nothing should be changed.

The principle embodying the said doctrine is that the subject matter of a suit should not be transferred to a third party during the pendency of the suit. In case of transfer of such immovable property, the transferee becomes bound by the result of the suit.

The doctrine of *Lis Pendens* essentially aims at (i) avoiding endless litigation, (ii) protecting either party to the litigation against the act of the other, (iii) avoiding abuse of legal process.

QNo:- 193 ,Correct Answer:- A

Explanation:- The law of the state or the nation where the matter in litigation transpired. The term *lex loci* can be employed in several descriptions, but, in general, it is used only for *lex loci contractus* (the law of the place where the contract was made), which is usually the law that governs the contract.

QNo:- 194 ,Correct Answer:- C

Explanation:- It's an embarrassing or tactless act or remark in a social situation.

QNo:- 195 ,Correct Answer:- A

Explanation:- A point of time; an indivisible period of time; the shortest space of time; an instant Calvin.



Actual CLAT Paper 2017 (Answer Keys)

QNo:- 196 ,Correct Answer:- A

Explanation:- "Evil intention."The intention to do harm; the intention to commit an illegal or immoral act."

QNo:- 197 ,Correct Answer:- D

Explanation:- *Autrefois convict* is a plea made by a defendant in a case when s/he is indicted for a crime or misdemeanor. By this plea, a defendant can claim that s/he was charged of the same crime under substantially same facts.

QNo:- 198 ,Correct Answer:- C

Explanation:- A corrupt judge

QNo:- 199 ,Correct Answer:- D

Explanation:- 'Bona Vacantia' means vacant goods and is the name given to ownerless property, which by law passes to the Crown.

QNo:- 200 ,Correct Answer:- D

Explanation:- *Caveat Venditor* is a Latin term which means let the seller beware. The person selling goods is accountable for providing information about the goods to the seller. It is a counter to *caveat emptor* and suggests that sellers can also be deceived in a market transaction.
